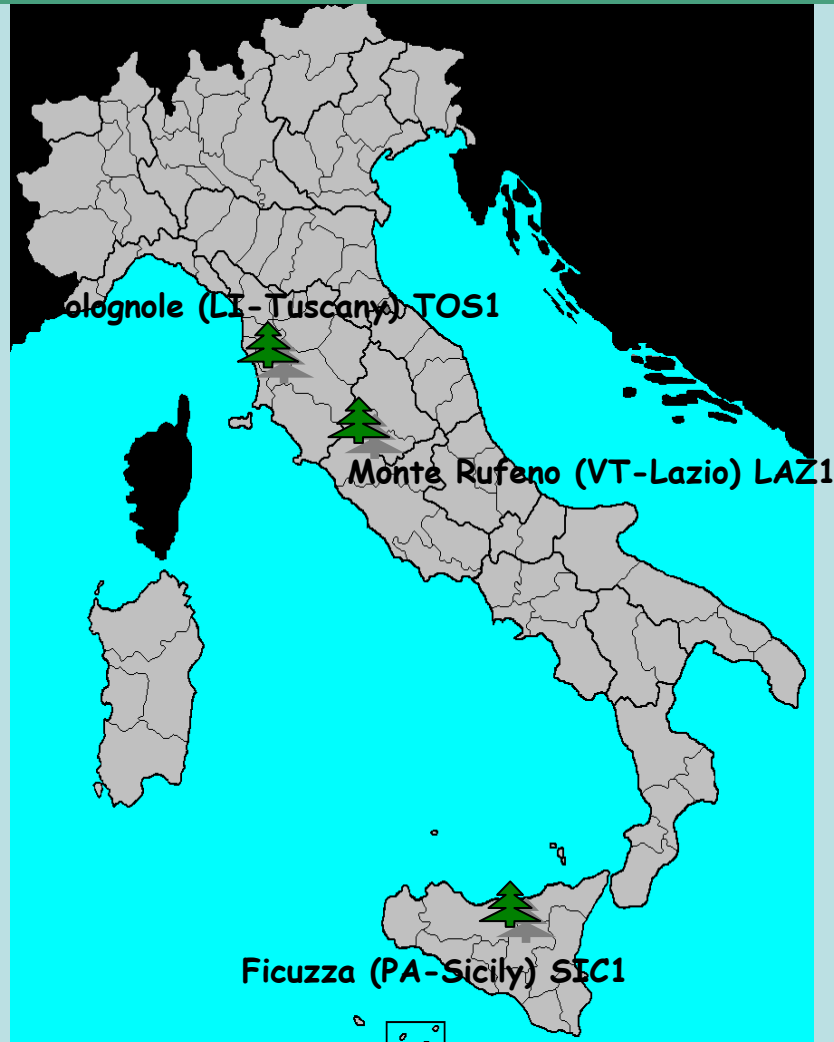


Sito LTER Italia n° 04: Foreste Mediterranee

Bruno Petriccione, Cristiana Cocciufa (Corpo Forestale dello Stato - Servizio CONECOFOR)



STUDY AREA



This site includes three research stations that are permanent monitoring plots belonging to CONECOFOR Programme:

TOS 1 (Colognole, LI-Tuscany)



Photo by B.Petriccione. Archivio CONECOFOR

mixed high-coppice forest *Quercus ilex* dominated

LAZ 1 (Monte Rufeno, VT-Lazio)

SIC 1 (Ficuzza, PA-Sicily)

mixed high-coppice forest *Quercus cerris* dominated

METHODS

<i>Research on-going</i>	<i>Veget.</i>	<i>Crown</i>	<i>Leaves</i>	<i>Soil</i>	<i>Soil sol.</i>	<i>Growth</i>	<i>Atm. dep.</i>	<i>Stem-flow</i>	<i>Wet-only</i>	<i>Meteo</i>	<i>Ozone</i>	<i>Phenology</i>	<i>Biodiv.</i>
LAZ1	1996	1996	1995	1995	1999	1996	1997	---	1999	1997	1997	2002	---
SIC1	1996	1996	1995	1995	---	1996	1997	---	---	2009-2010	1997-2006	2002	2003-2006
TOS1	1996	1996	1995	1995	2009-2010	1996	1996	---	---	1997*	1997	2002	2003-2006

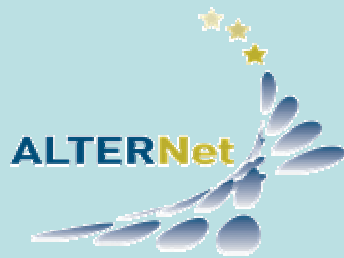
The three research stations included in Mediterranean Forests Site are ICP-Forests Level II Plots: so, methods adopted for the on-going research activities are harmonized according to the protocols of this International Programme (<http://www.icp-forests.org/>.)

Contact: Bruno Petriccione, Italian Forest Service



Photos by B.Petriccione

Further activities implemented in Mediterranean forests site



Within ALTER-Net WP R3 "Impacts of the main natural and anthropogenic drivers and pressures on biodiversity", LAZ1 Monte Rufeno research station was involved in a "Multi Site Trampling Experiment" for the assessment of the impact of selected disturbances in grassland and forests on biodiversity. (Contact: Giorgio Matteucci, National Council for Research, IBAF)

TOS1 and LAZ1 will become Integrated Monitoring Site !!



Riserva Naturale Monte Rufeno



Research project

Patterns of ecological complexity in LTER sites in Italy: *ad hoc* case studies for the integration of faunistic data in the Italian LTER network.



<http://it.wikipedia.org>



Photo by C. Cocciufa, Italian Forest Service



Photo by R. Kanka/LE-SAS

... but..ehm.. I am from Slovakia...



Photo by C. Cocciufa, Italian Forest Service